

FAME-SMD Type (Rev. 4.0)**Features**

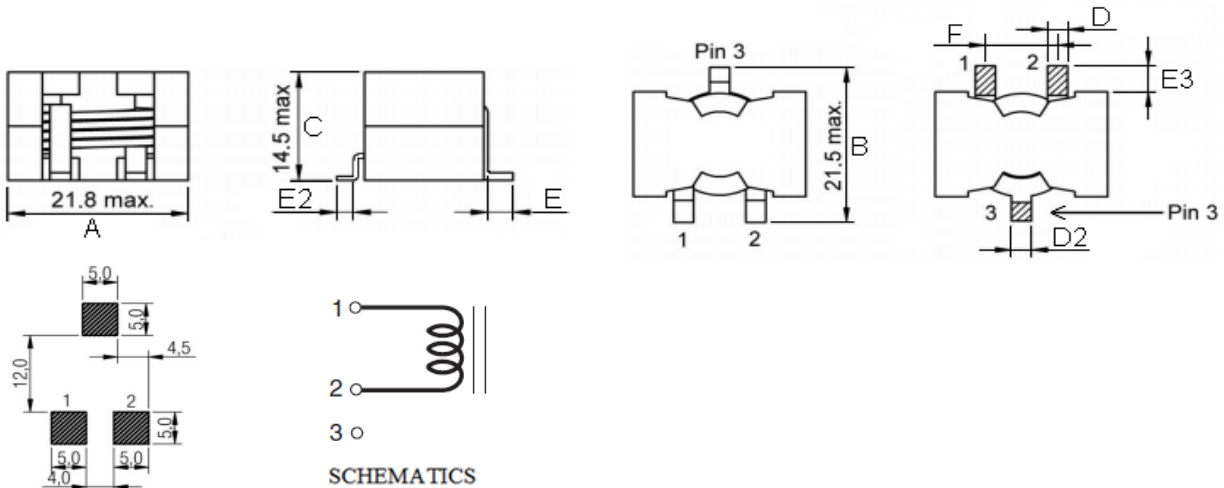
- * High current, low loss of iron powder core
- * Extremely low DCR; Current handling to >100 Amps
- * Third mounting pad for greater stability and board adhesion
- * Custom design available

Product Identification

FAME **2014** - **6R8** **M**

1 2 3 4

1. Product Code
2. Size Code: 21.8 * 21.5 * 14.5mm
3. Inductance: 6.8uH
4. Tolerance: M= $\pm 20\%$

Dimension & Recommended Pad Layout: [mm]

Size Code	A(max.)	B(max.)	C(max.)	D(± 0.2)	D2(ref.)	E(± 0.5)	E2(ref.)	E3(± 1.0)	F(± 0.5)
FAME2014	21.8	21.5	14.5	2.4	2.5	2.0	2.0	3.0	9.5

Electrical Characteristics

P/N	L (uH)	Tolerance ($\pm\%$)	DCR (m Ω) typ.	DCR (m Ω) max.	Isat (A) max.	Irms (A) max.
FAME2014-6R8M	6.8	20	2.8	3.1	23.0	20.0
FAME2014-100M	10.0	20	6.7	8.0	23.0	16.0

* Test Condition: @100KHz/ 0.1V, 25 °C Ambient

* Isat: DC current that will cause L to drop approximately 20%.

* Irms: DC current that will cause an approximate ΔT of 40°C.

* The part temperature (ambient + temp rise) should not exceed -30~105°C under worst case operating conditions.

* Circuit design, component placement, PWB trace size and thickness, airflow and other cooling provisions all effect the part temperature. Part temperature should be verified in the end application.

FAME series provides exceptionally high current carrying capability and very low DC resistance.

Applications

- * DC/DC converters, etc
- * Power supply for VTRs
- * LCD televisions, Lighting

Operating & Storage Condition :

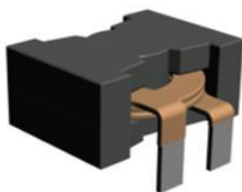
- * Operating Temp Stand Type: -55 to +125 °C
- * Storage Temp Stand Type: -40 to +85 °C
- * Storage Life Time: 12 months @25 °C, RH 70%

Test Equipment :

- * HP4284A, HP42841A-L, IDC, Q, RDC
- * HP8753D NETWORK ANALYZER-SRF

Standard Atmospheric Conditions :

- * Ambient Temp : 20+/-15 °C
- * Relative Humidity : 65 \pm 20%

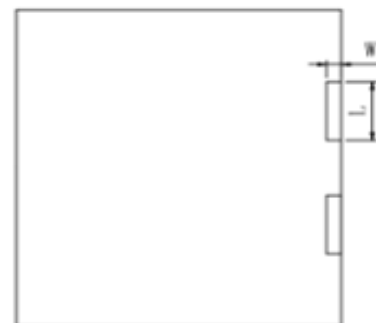
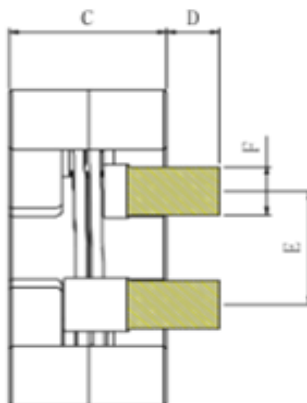
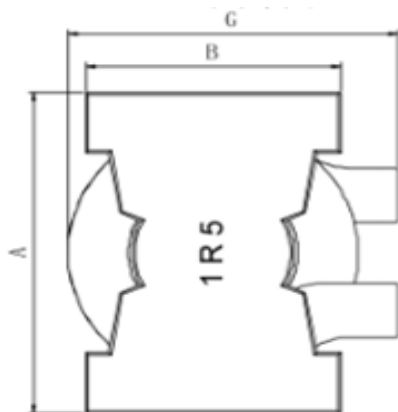
FAME-Dip Type (Rev. 4.0)**Features**

- * High current, low loss of iron powder core
- * Extremely low DCR; Current handling to >100 Amps
- * Third mounting pad for greater stability and board adhesion
- * Custom design available

Product Identification

FAME **2612** - **1R5** **M** **S**
 1 2 3 4 5

1. Product Code
2. Size Code: 26.5 * 24.5 * 12.0mm
3. Inductance: 1.5uH
4. Tolerance: M = $\pm 20\%$
- 5.S: special

Dimension: [mm]

* Core material: PC95

Size Code	A(±1.0)	B(±0.8)	C(±0.4)	D(±0.5)	E(±0.5)	F(±0.3)	G(±0.5)	L(ref.)	W(ref.)
2612	26.5	19.0	12.0	4.4	9.0	4.5	24.5	4.8	1.2

Electrical Characteristics

P/N	L (uH)	Tolerance (±%)	DCR (mΩ) max.	Isat (A) max.	Irms (A) max.
FAME2612-1R5MS	1.5	20	1.0	86.0	70.0

- * Test Condition : 100KHz , 1Vrms , 25 °C Ambient
- * Isat: DC current that will cause L to drop approximately 30%.
- * Irms: DC current that will cause an approximate ΔT of 40°C.

FAME series provides exceptionally high current carrying capability and very low DC resistance.

Applications

- * DC/DC converters, etc
- * Power supply for VTRs
- * LCD televisions, Lighting

Operating & Storage Condition :

- * Operating Temp Stand Type: -55 to +125 °C
- * Storage Temp Stand Type: -40 to +85 °C
- * Storage Life Time: 12 months @25 °C, RH 70%

Test Equipment :

- * HP4284A, HP42841A-L, IDC, Q, RDC
- * HP8753D NETWORK ANALYZER-SRF

Standard Atmospheric Conditions :

- * Ambient Temp : 20+/-15 °C
- * Relative Humidity : 65±20%

FAME-Dip Type (Rev. 4.0)

FAME series provides exceptionally high current carrying capability and very low DC resistance.

Features

- * High current, low loss of ferrite core
- * Extremely low DCR; Current handling to >100 Amps
- * Custom design available

Applications

- * DC/DC converters, etc
- * Power supply for VTRs
- * LCD televisions, Lighting

Operating & Storage Condition :

- * Operating Temp Stand Type: -40 to +125 °C
- * Storage Temp Stand Type: -40 to +125 °C
- * Storage Life Time: 12 months @25 °C, RH 70%

Product Identification

FAME **2919** - **220** **M**
 1 2 3 4

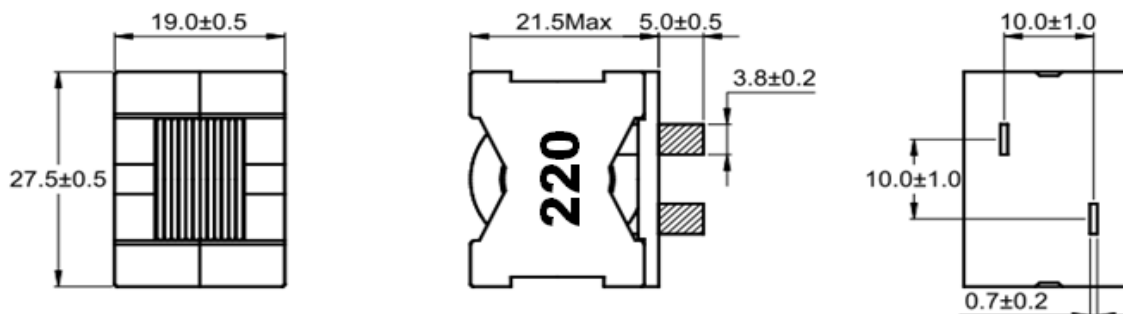
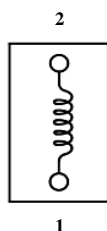
1. Product Code
2. Size Code (L*H): 27.5*19.0mm
3. Inductance: 22uH
4. Tolerance: M = ±20%

Test Equipment :

- * HP4284A, HP42841A-L, IDC, Q, RDC
- * HP8753D NETWORK ANALYZER-SRF

Standard Atmospheric Conditions :

- * Ambient Temp : 20+/-15 °C
- * Relative Humidity : 65±20%

Dimension: [mm]**Schematics:****Electrical Characteristics**

P/N	L (uH)	Tolerance (±%)	DCR (mΩ) max.	Isat (A) typ.	Irms (A) typ.
FAME2919-220M	22.0	20	6.2	18.0	22.0

- * Test Condition : 100KHz , 1Vrms , 25 °C Ambient
- * Isat: DC current that will cause L to drop approximately 20%.
- * Irms: DC current that will cause an approximate ΔT of 40°C.