

## FWC series (Rev. 4.0)



## Features &amp; Applications

- \* High permeability shielding for wireless charging receiving coils
- \* High saturation powered iron - not affected by permanent locating magnets
- \* Blocks charging flux from sensitive components or batteries
- \* Durable construction

## Product Identification

FWC      -      T      505006      -      001      □  
 1                      2                      3                      4                      5

1. Product Code
2. [T]-Tx ; [R]-Rx.
3. Size Code.
4. Series No.
5. [A-Z]: For customized design.

## Operating &amp; Storage Condition :

- \* Operating Temp. : -55 to +85 °C
- \* Storage Temp. : -25 to +35 °C
- \* Storage Life Time: 12 Months @25 °C, RH 70%

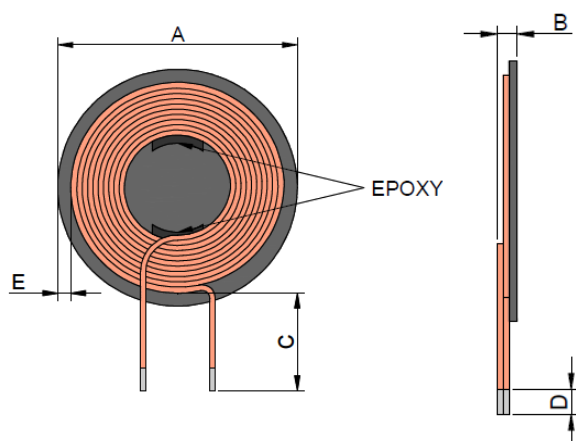
## Standard Atmospheric Conditions :

- \* Ambient Temp : 20±15 °C
- \* Relative Humidity : 65±20%

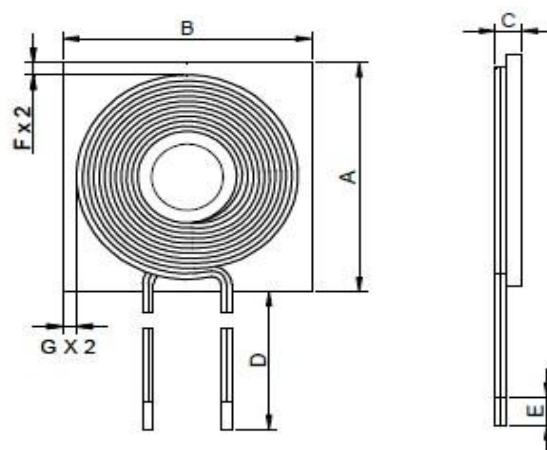
## Dimension: [ mm ]

## FWC-T Series

FWC-T5028 (Figure 1)

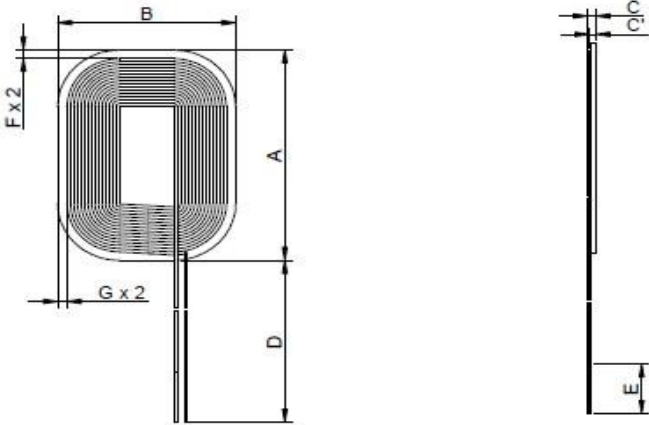


FWC-T5050 (Figure 2)



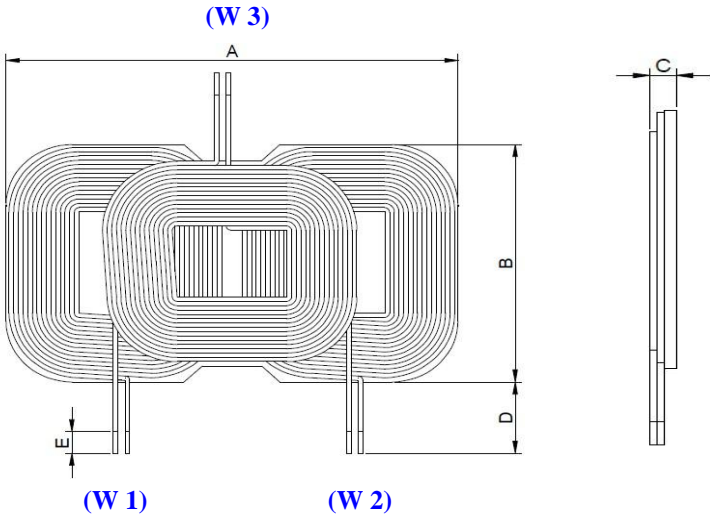
Size Code	A(±0.5)	B(±0.5)	C(±0.3)	D(±0.5)	E(±0.1)	F(min.)	G(min.)	Figure
5028	50.0	2.8	19.0±0.1	5.0	2.0	—	—	1
505005	50.0	50.0	5.2	30.0	6.0	2.0	2.0	2
505006	50.0	50.0	5.7	50.0	10.0	2.0	2.0	2

FWC-T5748



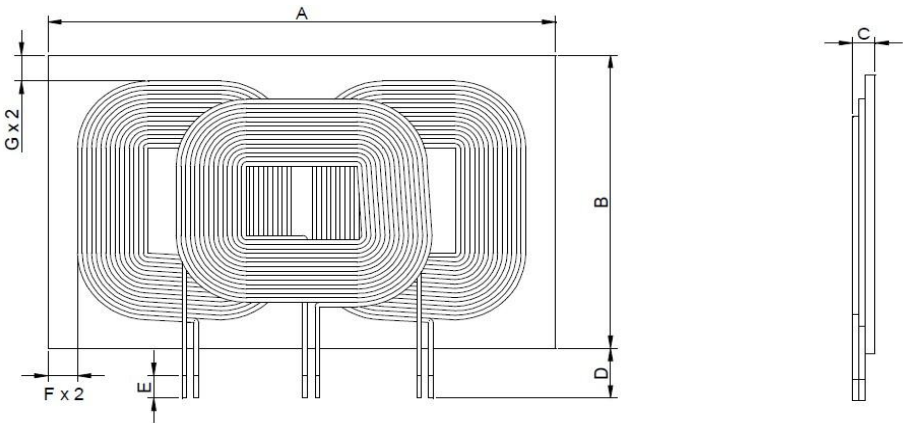
Size Code	A(±1.0)	B(±0.5)	C(max.)	C'(typ.)	D(±3.0)	E(±1.0)	F(±0.5)	G(±0.5)
574803	57.0	48.5	3.3	2.05	48.0	3.0	2.0	1.65

FWC-T9753



Size Code	A(max.)	B(±0.3)	C(max.)	D(±3.0)	E(±1.0)
975304	97.0	53.0	4.0	20	5.0

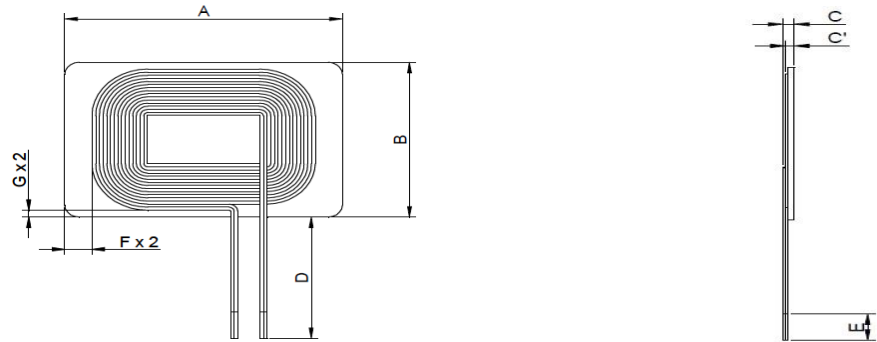
FWC-T10758



Size Code	A(max.)	B(max.)	C(±0.2)	D(±3.0)	E(±1.0)	F(min.)	G(min.)
1075805	107.0	58.0	3.4	20.0	5.0	5.0	2.0

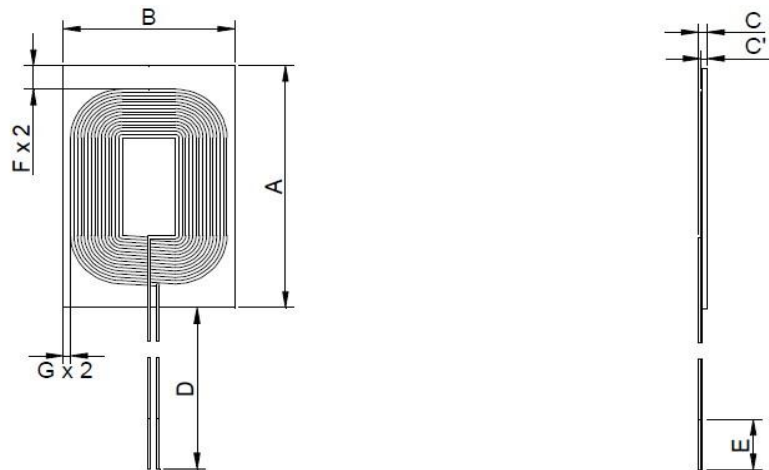
FWC-R Series

FWC-R4431



Size Code	A(±0.5)	B(±0.5)	C(max.)	C'(typ.)	D(±3.0)	E(±1.0)	F(min.)	G(min.)
443114	44.0	31.0	1.4	0.95	22.0	5.0	2.5	1.0

FWC-R4832



Size Code	A(±0.5)	B(±0.5)	C(max.)	C'(typ.)	D(±5.0)	E(±1.0)	F(min.)	G(min.)
483201	48.0	32.0	1.3	0.87	50.0	10.0	2.5	1.2

## Electrical Characteristics

P/N	Inductance (uH)	DCR (mΩ)	Isat. (A)	Irms. (A)	WPC No.
<b>Tx Type</b>					
FWC-T5028-001	6.3 +/-10%	35.0 Typ. / 50.0 Max.	23.0 Max.	3.8 Max.	N/A
FWC-T505005-001	24.0 +/-8%	71.0 Typ. / 75.0 Max.	30.0 Max.	5.0 Max.	A10
FWC-T505006-002	6.3 +/-10%	28.5 Typ. / 35.0 Max.	40.0 Max.	10.0 Max.	A11
FWC-T574803-001	11.5 +/-10%	60.0 +/-20%	35.0 Max.	5.2 Max.	A6 Single
FWC-T1075805-001	11.5 +/-10%	60.0 +/-20%	35.0 Max.	5.2 Max.	A6
FWC-T975304-001	11.5 ( W1, 2 ) +/-10%	60.0 +/-20%	35.0 Max.	5.2 Max.	A6
FWC-T975304-001	10.5 ( W3 ) +/-10%	60.0 +/-20%	35.0 Max.	5.2 Max.	A6
<b>Rx Type</b>					
FWC-R443114-001	10.0 +/-0.5	150 Typ. / 180 Max.	1.0 Max.	2.8 Max.	N/A
FWC-R483201-001	13.0 +/-8%	210 Typ. / 250 Max.	3.0 Max.	2.5 Max.	N/A

\* Test Condition: @ 100KHz, 1.0V.

\* Irms DC current (A) that will cause an approximate ΔT of 40°C.

\* Isat DC current (A) that will cause L to drop approximately 10%.