

FAMH series (Rev. 4.0)

The **FAMH** series provides exceptionally high current carrying capability and very low DC resistance, all in a low profile, small footprint package.

Applications

- * DC/DC converters, etc
- * Power supply for VTRs
- * LCD televisions

Features

- * High current, low loss of iron powder core
- * Low profile for machine placement
- * Minimize electromagnetic interference
- * Suppress common mode noise
- * Prevent EMI effect via precise impedance
- * Custom design available

Operating & Storage Condition :

- * Operating Temp : Stand Type: -55 to +125 °C
- * Storage Temp : Stand Type -40 to +85 °C
- * Storage Life Time : 12 Months @ 25 °C, RH 65%

Product Identification

FAMH **1360** - **4R7** **M**
 1 2 3 4

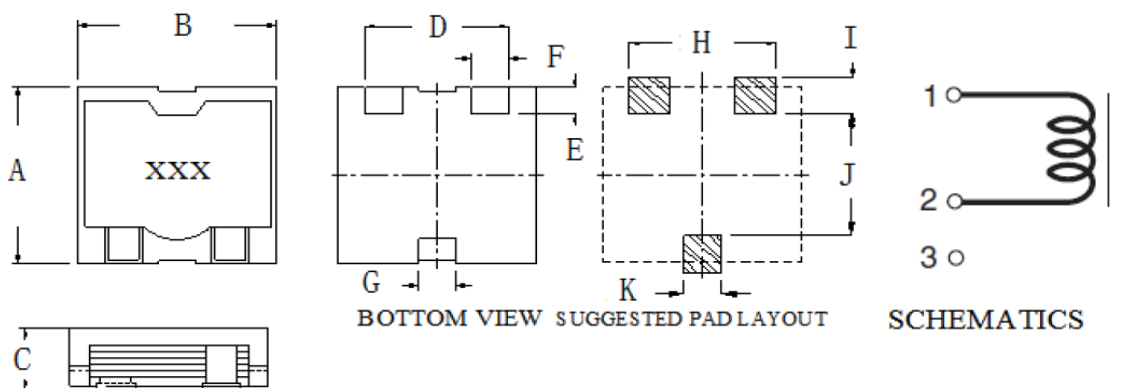
1. Product Code
2. Size Code: 13.5 * 13 * 5.8mm
3. Inductance: 4.7uH
4. Tolerance: M=±20%

Test Equipment :

- * HP4284A, HP42841A-L, IDC, Q, RDC
- * HP8753D NETWORK ANALYZER-SRF

Standard Atmospheric Conditions :

- * Ambient Temp : 20+/-15 °C
- * Relative Humidity : 65±20%

Dimension & Recommended PAD Layout: [mm]

Size Code	A(max.)	B(max.)	C(max.)	D	E	F	G	H	I	J	K
FAMH1052	10.6	10.6	5.2	8.0±0.2	2.0	2.5	1.5	8.2	2.5	5.8	2.4
FAMH1360	13.5	13.0	5.8	9.4±0.3	2.0	2.5	2.5	9.8	2.5	8.0	3.0

FAMH series (Rev. 4.0)

Electrical Characteristics

P/N	L (μ H)	Tolerance	RDC ($m\Omega$) typ.	RDC ($m\Omega$) max.	Isat (A) max. @L-Drop 30%	Irms (A) max. @ $\Delta T=45^\circ\text{C}$
FAMH1052-R80M	0.8	20%	3.8	4.0	25.6	16.3
FAMH1052-1R0M	1.0	20%	3.8	4.0	17.5	16.3
FAMH1052-1R2M	1.2	20%	5.4	6.0	21.3	15.0
FAMH1052-1R3M	1.3	20%	3.8	4.0	17.2	16.3
FAMH1052-1R5M	1.5	20%	3.8	4.0	14.5	15.0
FAMH1052-1R8M	1.8	20%	5.4	6.0	14.3	15.0
FAMH1052-2R0M	2.0	20%	7.8	9.0	16.2	11.5
FAMH1052-2R2M	2.2	20%	3.8	4.0	10.0	16.3
FAMH1052-2R5M	2.5	20%	5.4	7.5	12.1	12.0
FAMH1052-3R2M	3.2	20%	5.4	6.0	8.5	15.0
FAMH1052-4R0M	4.0	20%	7.8	9.0	8.8	11.5
FAMH1052-4R3M	4.3	20%	5.4	7.5	7.0	12.0
FAMH1052-5R7M	5.7	20%	7.8	9.0	6.0	11.50
FAMH1360-R33M	0.33	20%	0.77	0.86	43.0	16.9
FAMH1360-R65M	0.65	20%	0.77	0.85	28.0	16.9
FAMH1360-1R0M	1.00	20%	2.36	2.60	33.5	13.0
FAMH1360-1R8M	1.80	20%	2.36	2.60	20.0	13.0
FAMH1360-2R7M	2.70	20%	2.36	2.60	14.0	13.0
FAMH1360-4R0M	4.00	20%	5.50	6.05	13.0	9.4
FAMH1360-4R7M	4.70	20%	5.50	6.05	12.0	9.4
FAMH1360-6R0M	6.00	20%	5.50	6.06	9.5	9.4
FAMH1360-8R0M	8.20	20%	9.83	10.81	9.0	7.6
FAMH1360-100M	10.00	20%	9.83	10.81	7.5	7.2

* Test Condition: @100KHz/ 0.1V

* Irms DC current (A) that will cause an approximate ΔT of 45°C

* Isat DC current (A) that will cause L to drop approximately 30%