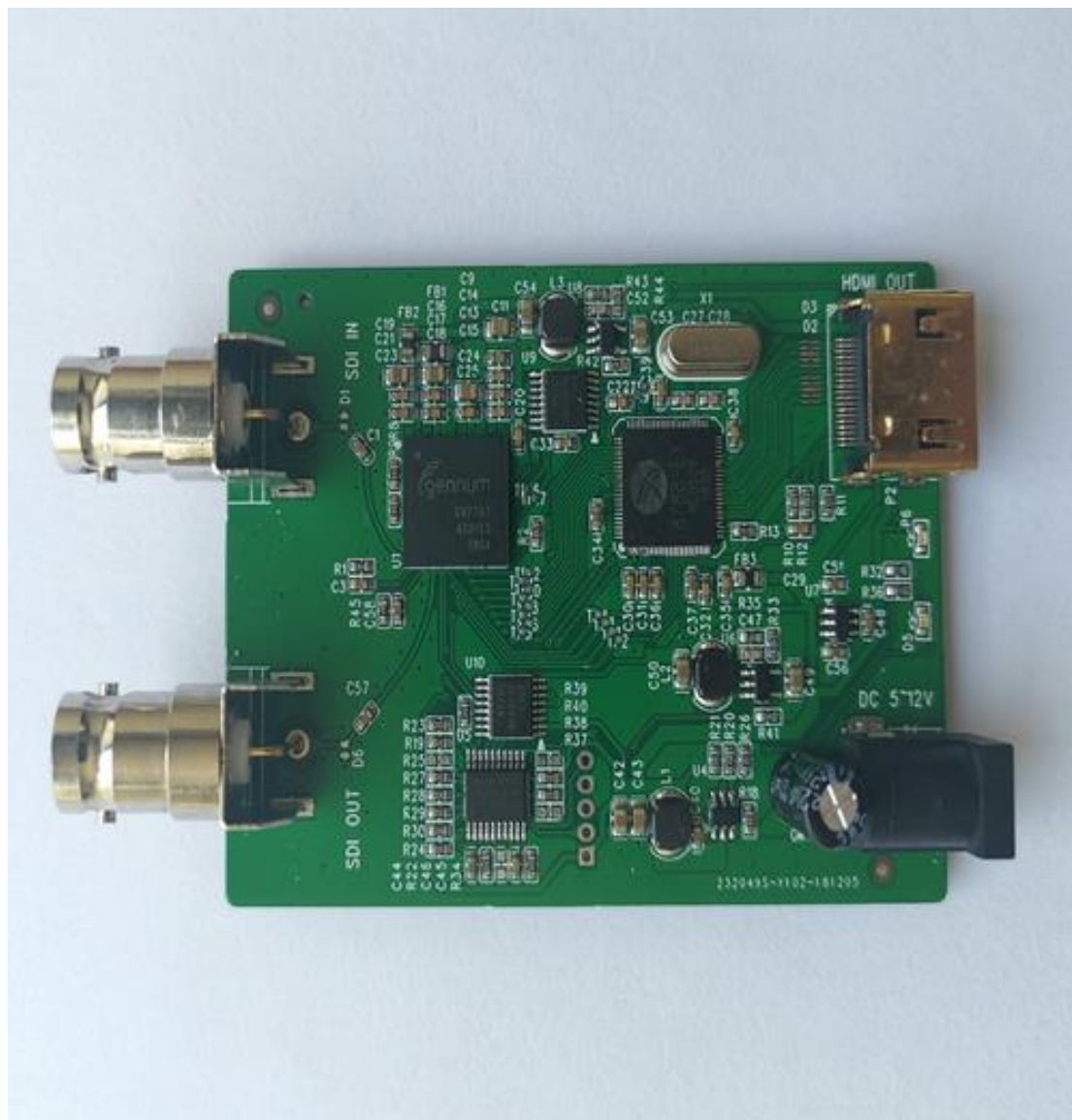


SDI to HDMI solution description document



The basic specifications of this scheme are as follows：

Input signal support：

SDI：1280x720P (25/30/50/60)

1920x1080I (50/60)

1920x1080P (24/25/30/50/60)

Output signal support：

HDMI：1280x720P (25/30/50/60)

1920x1080I (50/60)

1920x1080P (24/25/30/50/60)

Connector function definition: (subject to the latest PCB file of Chipav)

P1：SDI Input

P3：SDI Loop Output

P2：HDMI Output

P4：Power Input 5 / 12V

Operating instructions：

Before the PCB board is not powered on, the SDI signal source is inserted into the P1 interface through the coaxial cable, and then connected to the P2 / P3 interface according to their own needs. Finally, 5 / 12V power supply is connected, and the board can work normally.

Chips provided by chipav are：

The solution consists of three main chips, and the process is as follows:

GV7704：Decode SDI signal and output double-edge DDR signal.

N76E003：The controller for the overall solution.

CV8788：Encode the double-edge DDR signal into HDMI signal output.